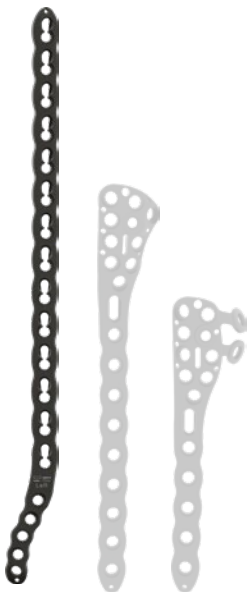


PangeaTM

Distal Humerus Plate

Design rationale



Pangea Distal Humerus Plate

Design rationale

stryker

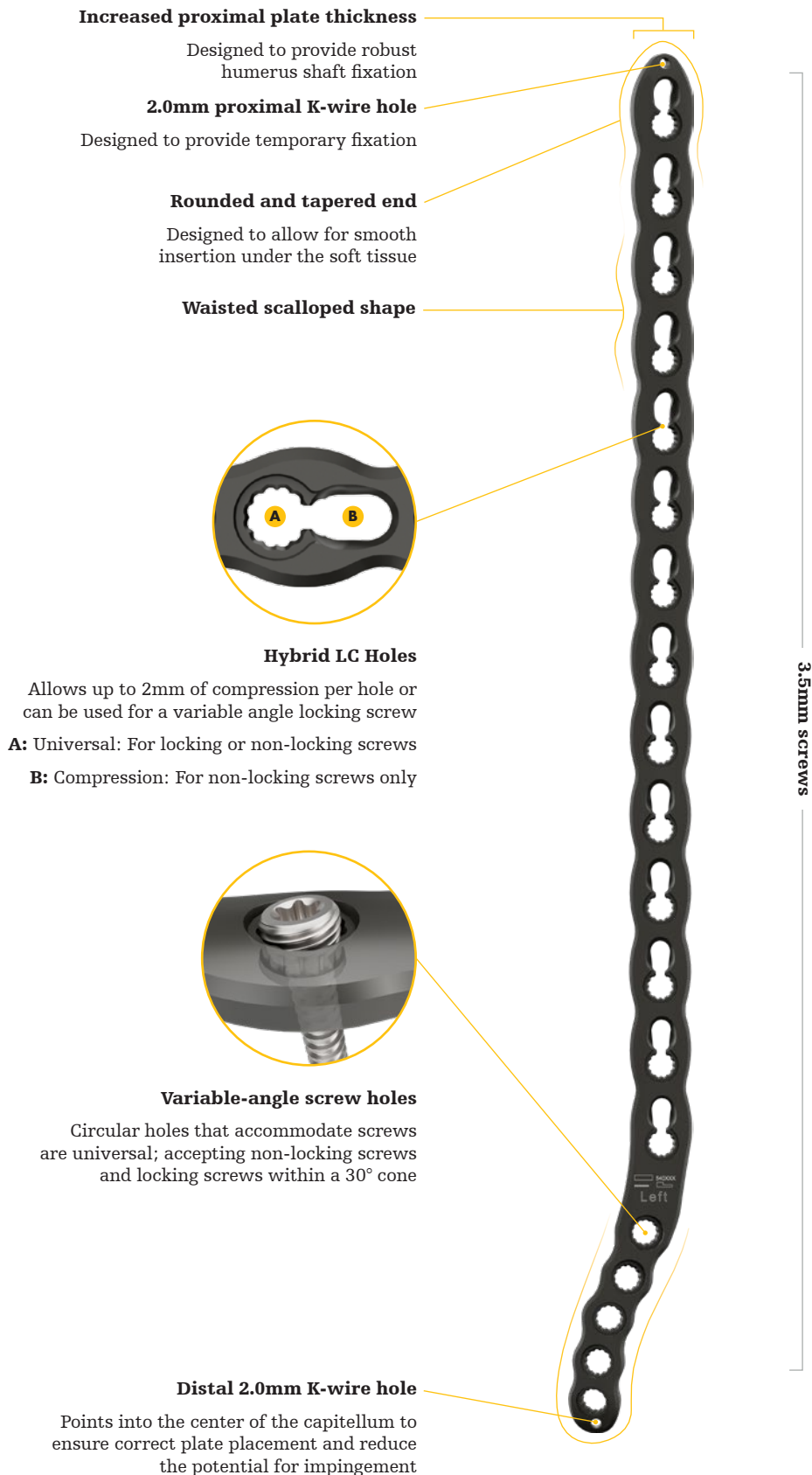
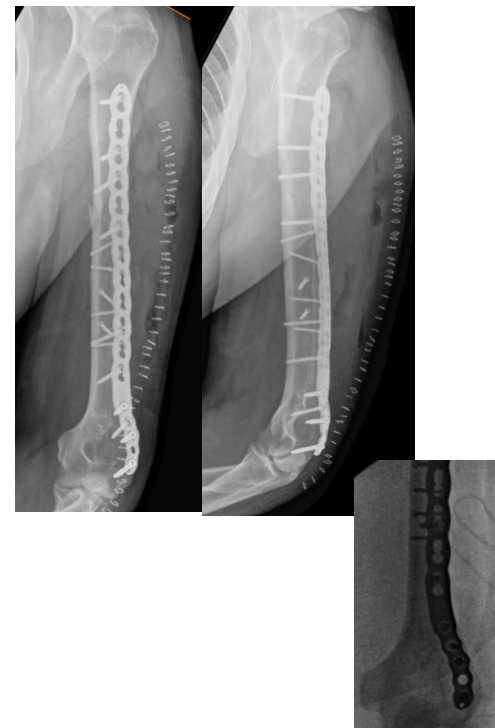


Plate placement



- The distal portion of the plate should be placed lateral to the trochlea and the olecranon fossa on the posterior aspect of the distal humerus
- Fixed angle drill sleeve may be used as a handle for control of plate placement and positioning¹

Pangea Distal Humerus Plate X-rays



Pangea Distal Humerus Plate

Design rationale

stryker

Fit

- Plate was designed using SOMA analytics to improve anatomic fit and reduce the potential for impingement with the radial head in full extension²
- Plate extends further distally than competitive systems such as Synthes and Skeletal Dynamics, further increasing the distal fixation by increasing the working length of the plate²



Technical specifications







- Plate Lengths: 4-14 holes (130-300mm)
- Thickness: 4.2mm proximally, 2.0mm distally
- Left and right anatomic plate options
- **Drill bits:**
 - Ø2.5mm x 135mm (542020)
 - Ø2.5mm x 215mm (542021)



Clinical corner

A maximum of 2mm of compression per hole, provides surgeons the ability to achieve more compression with fewer screws.

Screw platform

| | | | |
|--------------------|-----|---|----------|
| Multiaxial locking | 3.5 |  | 10-120mm |
| | 3.5 |  | 10-120mm |
| Cancellous | 3.5 |  | 10-120mm |
| | 4.0 |  | 10-100mm |
| | 4.0 |  | 10-100mm |
| Cable plug washers | |  | |

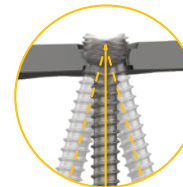


Predetermined trajectory



Screws in the predetermined screw trajectory

Variable angle trajectory



Screw trajectories using variable angle locking to obtain the widest allowable screw trajectory

References:

1. Pangea Distal Humerus Operative Technique, PGA-ST-2, 03-2023
2. Internal Report № D0000262573, Rev AA, Selzach, Switzerland

This document is intended solely for the use of healthcare professionals. A surgeon must always rely on his or her own professional clinical judgment when deciding whether to use a particular product when treating a particular patient. Stryker does not dispense medical advice and recommends that surgeons be trained in the use of any particular product before using it in surgery.

The information presented is intended to demonstrate the breadth of Stryker's product offerings. A surgeon must always refer to the package insert, product label and/or instructions for use before using any of Stryker's products. Products may not be available in all markets because product availability is subject to the regulatory and/or medical practices in individual markets. Please contact your sales representative if you have questions about the availability of products in your area. Not intended for promotional or marketing use outside of the United States and Canada.

Stryker Corporation or its affiliates own, use, or have applied for the following trademarks or service marks: Pangea, Stryker. All other trademarks are trademarks of their respective owners or holders.

Content ID: PGA-BR-3_Rev-1, 12-2024

Copyright © 2023 Stryker