

Live OR training

VSO GO

Experience a live procedure in a Virtual Surgical Observation (VSO GO) without ever leaving your office. A VSO GO transports you into a faculty's OR to watch a procedure with multiple views and dialogue directly with the faculty in real time! VSO GOs are a premier peer-to-peer educational tool, and we hope you'll make them part of your education journey.



VSO GO procedures

Mako Total Knee | Mako Total Hip | Mako Partial Knee | Manual DA with Insignia

VSO GO faculty

Eastern Time (ET)



Rajesh Jain, M.D.

Vantage Surgery Center | Moorestown, NJ

ET Mon. 8:00 a.m.

Mako Total Knee, Mako Partial Knee and Mako Total Hip (DS)

Residency: SUNY Upstate Medical University, University Hospital, Syracuse, NY

Fellowship: New England Baptist Hospital, Boston, MA



Robert Marchand, M.D.

South County Hospital | Wakefield, RI

ET Tue., Wed., Fri. 7:00 a.m.

Mako Total Knee, Mako Partial Knee and Mako Total Hip (DA)

Residency: Hospital for Special Surgery, New York, NY

Internship: Roosevelt-St. Luke's Hospital, New York, NY



Fabio Orozco, M.D.

AtlantiCare Reg. Med. Center | Pomona, NJ

ET Tue., Thur., Fri. 7:30 a.m.

Mako Total Knee and Mako Partial Knee

Residency: Thomas Jefferson University Hospital, Philadelphia, PA

Fellowship: Rothman Institute, Philadelphia, PA



Jeremy Reid, M.D.

Vantage Surgery Center | Moorestown, NJ

ET Tue. 8:00 a.m.

Mako Total Knee, Mako Partial Knee and Mako Total Hip (DA)

Residency: University of California Los Angeles Medical Center, Los Angeles, CA

Fellowship: Hospital for Special Surgery, New York, NY



Scott Schoifet, M.D.

Vantage Surgery Center | Moorestown, NJ

ET Thur. 7:30 a.m.

Mako Total Knee and Mako Partial Knee

Residency: University of Rochester, Strong Memorial Hospital, Rochester, NY
St. Vincent's Hospital & Medical Center, New York, NY

Fellowship: Mayo Clinic, Rochester, MN

For more information or to schedule a VSO GO, contact your sales representative.

We look forward to accompanying you on your education journey!

Central Time (CT)



Paul Jacob, D.O.

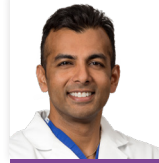
Community Hospital | Oklahoma City, OK

CT Mon., Tue., Wed., Fri. 6:00 a.m., 7:15 a.m.

Mako Total Knee, Mako Partial Knee and Mako Total Hip (PL)

Residency: Doctors Hospital, Grant Medical Center, Columbus, OH

Fellowship: Cleveland Clinic, Cleveland, OH



Yogesh Mittal, M.D.

C.O.R.E. Jenks Surgery Center | Tulsa, OK

CT Tue., Thur. 8:00 a.m.

Mako Total Knee, Mako Partial Knee and Mako Total Hip (PL)

Residency: Fort Worth Affiliated Hospitals, John Peter Smith Hospital, Fort Worth, TX

Fellowship: OrthoCarolina, Charlotte, NC

Mountain/Pacific Time (MT/PT)



Brian Blackwood, M.D.

Boulder Community Health | Boulder, CO

MT Wed. 7:30 a.m.

Mako Total Knee, Mako Partial Knee, Mako Total Hip (DA) and Manual DA with Insignia

Residency: University of New Mexico, Albuquerque, NM

Fellowship: Coon Joint Replacement Institute, St. Helena, CA



James Crutcher, M.D.

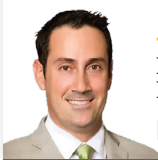
Swedish Orthopedic Institute | Seattle, WA

PT Mon., Tues. 8:00 a.m.

Mako Total Knee and Mako Partial Knee

Residency: University of Washington Department of Orthopaedics, Seattle, WA

Fellowship: Institute for Bone and Joint Disorders, Phoenix, AZ



John Tiberi, M.D.

Kerlan Jobe Orthopaedic Clinic, Los Angeles, CA

PT Thur., Fri. 7:00 a.m.

Mako Total Knee, Mako Partial Knee and Mako Total Hip (DA)

Residency: Harbor – University of California Los Angeles Medical Center, Los Angeles, CA

Fellowship: Massachusetts General Hospital Harvard Medical School, Boston, MA



Sean Toomey, M.D.

Swedish Orthopedic Institute | Seattle, WA

PT Mon. 7:30 a.m., Tue. 8:00 a.m.

Mako Total Knee, Mako Partial Knee and Mako Total Hip (DA)

Residency: The Union Memorial Hospital, Johns Hopkins Medical Center, Baltimore, MA

Fellowship: Anderson Orthopedic Research Institute, Alexandria, VA

The faculty are paid consultants of Stryker Orthopaedics. The opinions expressed by the faculty are those of the faculty and not necessarily those of Stryker. Individual experiences may vary. This document is intended solely for the use of healthcare professionals. A surgeon must always rely on his or her own professional clinical judgment when deciding whether to use a particular product when treating a particular patient. We do not dispense medical advice and recommend that surgeons be trained in the use of any particular product before using it in surgery. The information presented is intended to demonstrate Stryker's products. A surgeon must always refer to the package insert, product label and/or instructions for use, including the instructions for cleaning and sterilization (if applicable), before using any of Stryker's products. Products may not be available in all markets because product availability is subject to the regulatory and/or medical practices in individual markets. Please contact your representative if you have questions about the availability of Stryker's products in your area. Stryker or its affiliated entities own, use, or have applied for the following trademarks or service marks: Insignia, Mako, SmartRobotics, Stryker. All other trademarks are trademarks of their respective owners or holders.