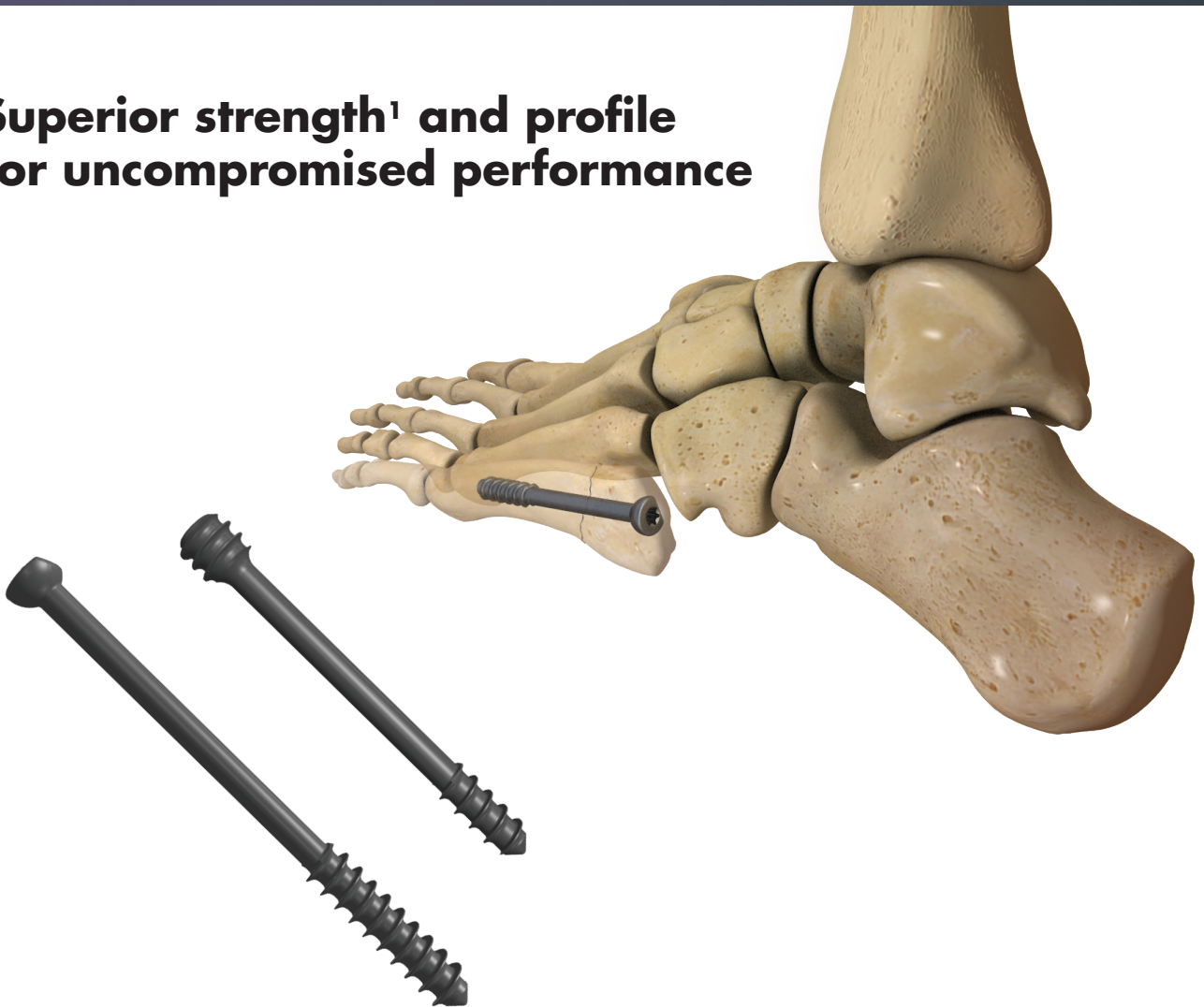


# Ortholoc<sup>®</sup> 2

## Jones Fracture System

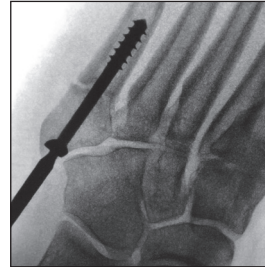
**Superior strength<sup>1</sup> and profile  
for uncompromised performance**



# Stryker's next evolution: Jones fractures

## Reinvented profile

The **first and only**<sup>2</sup> anatomically designed chamfered screw head to reduce lateral cuboid impingement, a site of painful hardware in 9%-30% of patients.<sup>3</sup>



Ortholoc 2 Jones Fracture Chamfered Screw



Typical headed screw

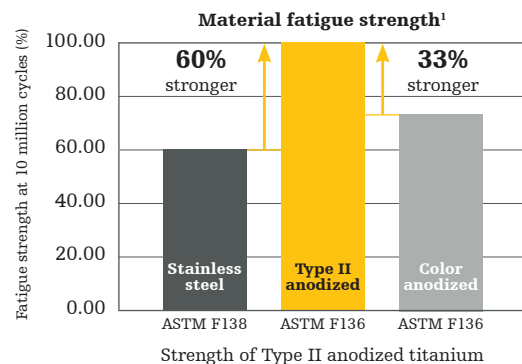
## Dual headless compression

Instrument-assisted dual compression for increased fracture reduction.



## Superior strength

**Type II anodized TI alloy** provides increased material fatigue strength for improved implant longevity.



**References:**

1. Data Available on File.
2. As of Sept. 1, 2019. Based on Publicly Available Information.
3. O'Malley et al. (2009) Foot and Ankle Specialist.
4. Sumitomo et al. (2008) J Mater. Sci. in Mater. Medicine and Data on File.

Stryker Corporation or its divisions or other corporate affiliated entities own, use or have applied for the following trademarks or service marks: Ortholoc, Stryker. All other trademarks are trademarks of their respective owners or holders.