

Elevate your approach with SmartRobotics™

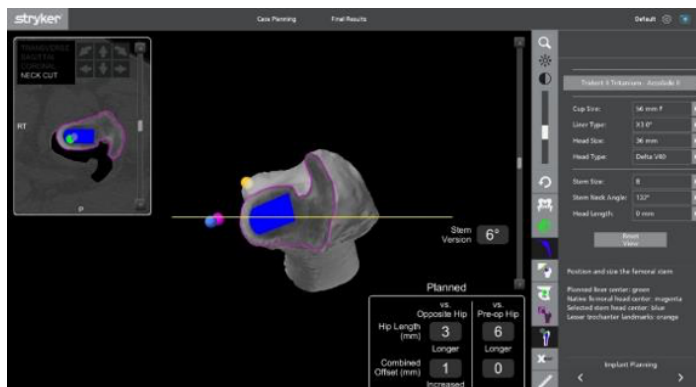
Direct anterior with Mako Total Hip

- ▶ With CT-based 3D modeling and new planning features, Mako Total Hip 4.0 provides unprecedented information with the goal of helping surgeons enhance patient outcomes. And when it comes to the direct anterior approach (DAA), where the field of view may be obscured, knowing more about a patient's unique anatomy can make all the difference.

Know more...so much more with new planning features

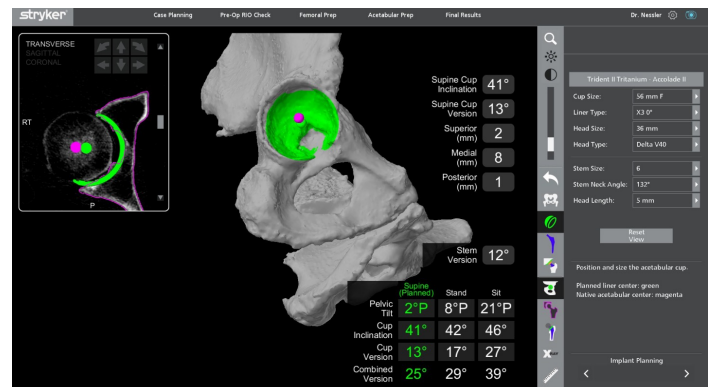
Neck resection view

Know more with a preoperative view of the planned stem that is in a position corresponding to what is seen intraoperatively, allowing for better assessment of the stem placement in the express workflow.



Pelvic tilt planning

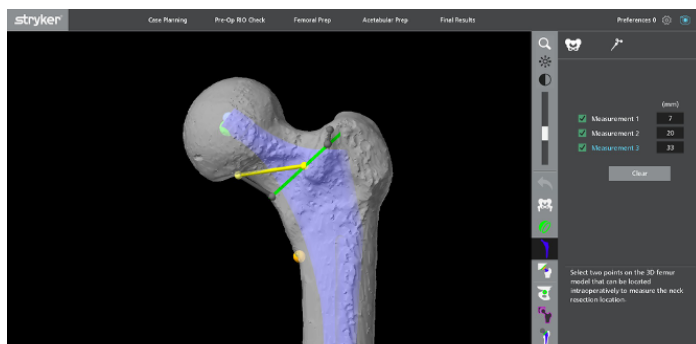
Know more with patient-specific cup positioning that takes into account a patient's pelvic tilt in the functional sit, stand and supine poses.



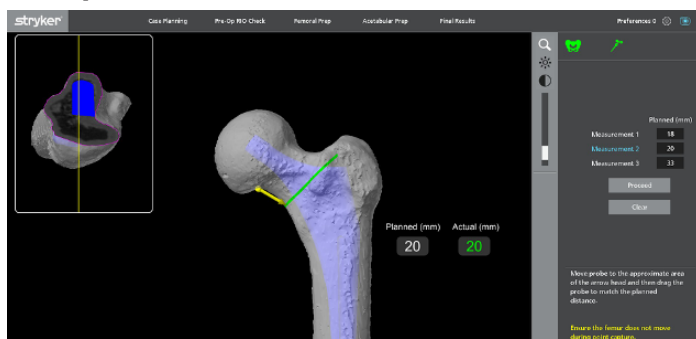
Digital ruler tool

Surgeons can now capture preoperative measurements to use intraoperatively so they can more easily plan and execute an accurate neck resection.

Preoperative

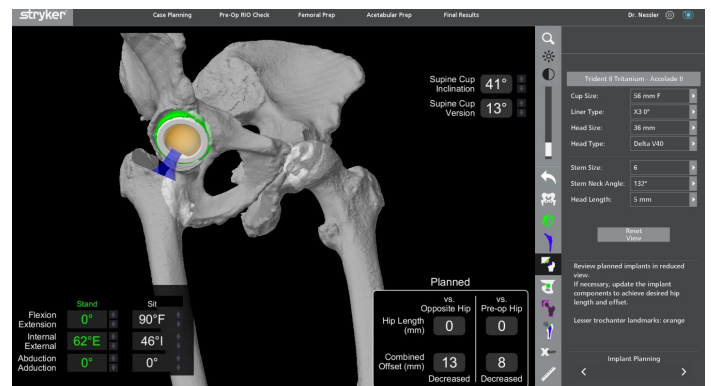


Intraoperative



Virtual range-of-motion impingement detection

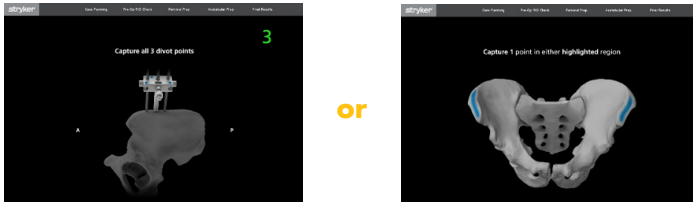
Know more about the femur-to-pelvis and component relationship in different patient positions, detect potential impingement and adjust implant placement, type and/or size to address those potential impingement scenarios.



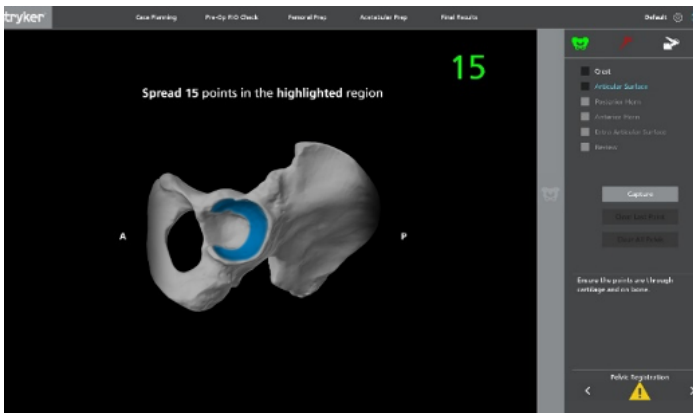
DAA-specific registration

Enhance your user experience with new approach-specific, region-based registration that has more accessible registration points for DA surgeons.

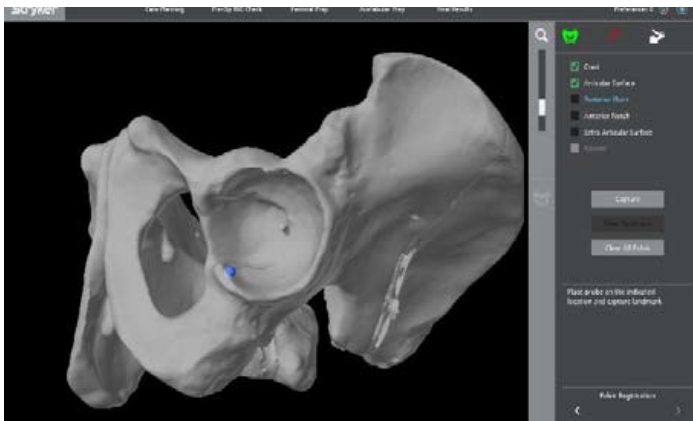
Crest landmark



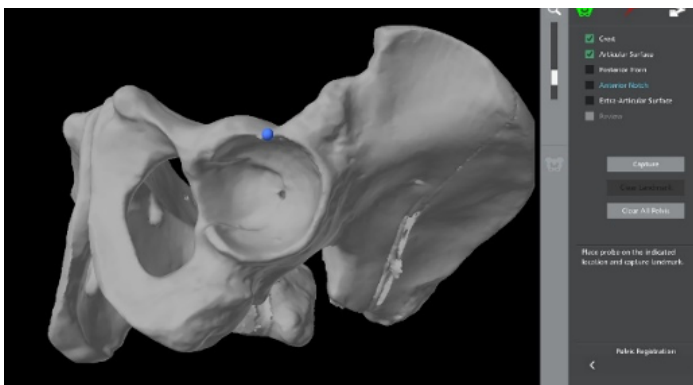
Articular surface



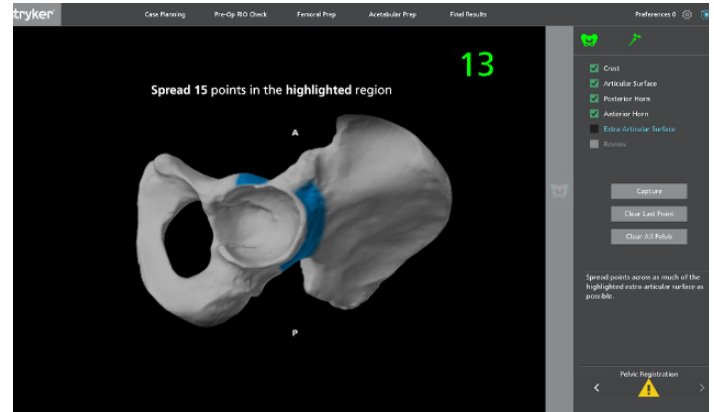
Posterior horn landmark



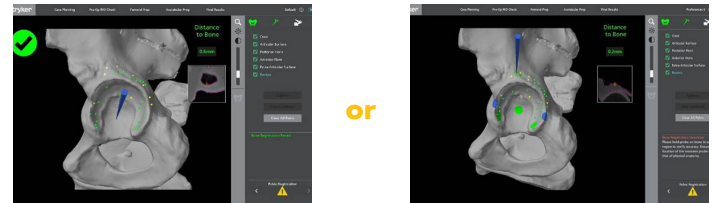
Anterior notch landmark



Extra-articular surface



Verification



Auto verification

Manual verification

Cut less¹

Only Mako features AccuStop™ haptic technology, which enables single-stage reaming and provides auditory, visual and tactile feedback that helps surgeons stay within the planned boundaries during bone prep and implant placement. This allows surgeons to cut what's planned precisely for each patient, and that can mean greater preservation of healthy bone¹ and decreased blood loss² when compared to manual surgery.

That's Mako Total Hip. That's SmartRobotics™

Learn more at makoknowmorecutless.com

Reference

1. Suarez-Ahedo C, Gui C, Martin TJ, Chandrasekaran S, Lodhia P, Domb BG. Robotic-arm assisted total hip arthroplasty results in smaller acetabular cup size in relation to the femoral head size: a matched-pair controlled study. *Hip Int.* 2017;27(2):147-152. doi:10.5301/hipint.5000418
2. Bukowski BR, Anderson P, Khlopas A, Chughtai M, Mont MA, Ilgen RL 2nd. Improved functional outcomes with robotic compared with manual total hip arthroplasty. *Surg Technol Int.* 2016;29:303-308.

A surgeon must always rely on his or her own professional clinical judgment when deciding whether to use a particular product when treating a particular patient. Stryker does not dispense medical advice and recommends that surgeons be trained in the use of any particular product before using it in surgery.

The information presented is intended to demonstrate the breadth of Stryker's product offerings. A surgeon must always refer to the package insert, product label and/or instructions for use before using any of Stryker's products. The products depicted are CE marked according to the Medical Device Regulation 2017/745 or the Medical Device Directive 93/42/EEC. Products may not be available in all markets because product availability is subject to the regulatory and/or medical practices in individual markets. Please contact your sales representative if you have questions about the availability of products in your area.

Stryker Corporation or its divisions or other corporate affiliated entities own, use or have applied for the following trademarks or service marks: AccuStop, Mako, SmartRobotics, Stryker. All other trademarks are trademarks of their respective owners or holders.