

stryker®

Craniomaxillofacial

D-LACTIDE
CONTOURABILITY

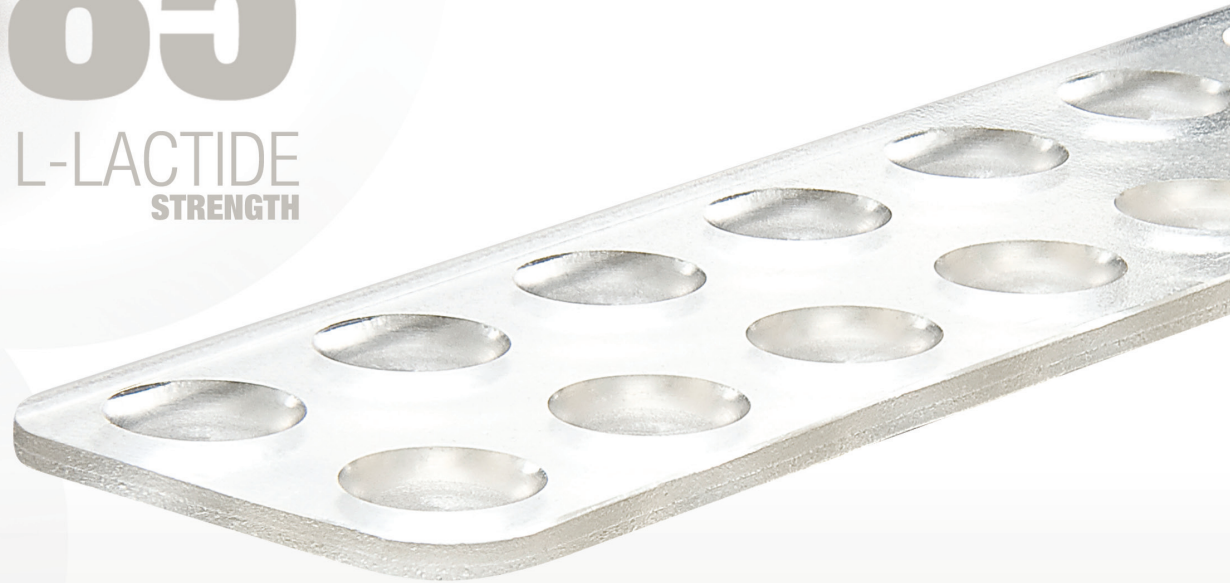
5%

85%

L-LACTIDE
STRENGTH

10%

GLYCOLIDE
ABSORPTION



DELTA

No Pins. No Gimmicks.

1.7

1.7mm Delta Plates

Partial Countersink Plates

70-92044 Partial Countersink Plate, 2 x 21, 0.75 mm Thick

70-92045 Partial Countersink Plate, 3 x 21, 0.75 mm Thick

70-92046 Partial Countersink Plate, 2 x 21, 0.50 mm Thick

70-92047 Partial Countersink Plate, 3 x 21, 0.50 mm Thick

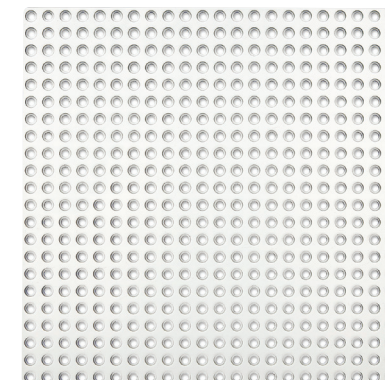
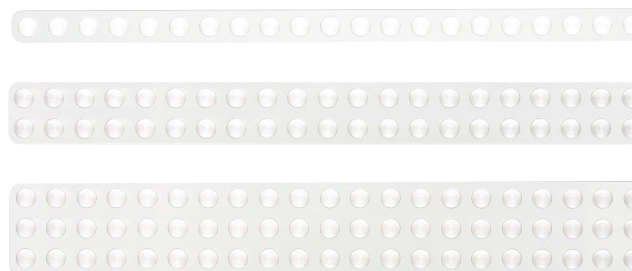
70-92055 Partial Countersink Plate, 1 x 21, 0.50 mm Thick

70-92056 Partial Countersink Plate, 1 x 21, 0.75 mm Thick

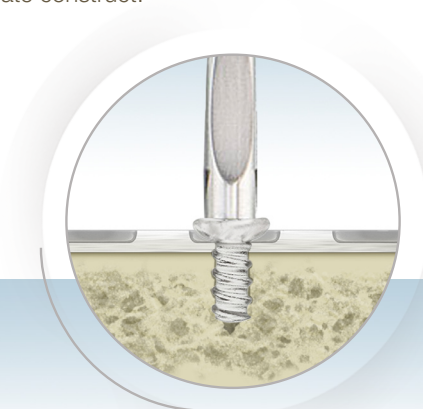
Partial Countersink Mesh

70-92052 Partial Countersink Mesh, 122 x 122 mm, 0.5 mm Thick

70-92053 Partial Countersink Mesh, 122 x 122 mm, 0.75 mm Thick



- Partial Countersinks allow for a tighter, more stable interface between the plate and screw, minimizing any micro movement between the bone-screw-plate construct.
- Unused countersinks may add to the the rigidity and strength of the construct.
- Delta Polymer offers an attractive combination of strength, contourability, and balanced resorption.¹



2.2

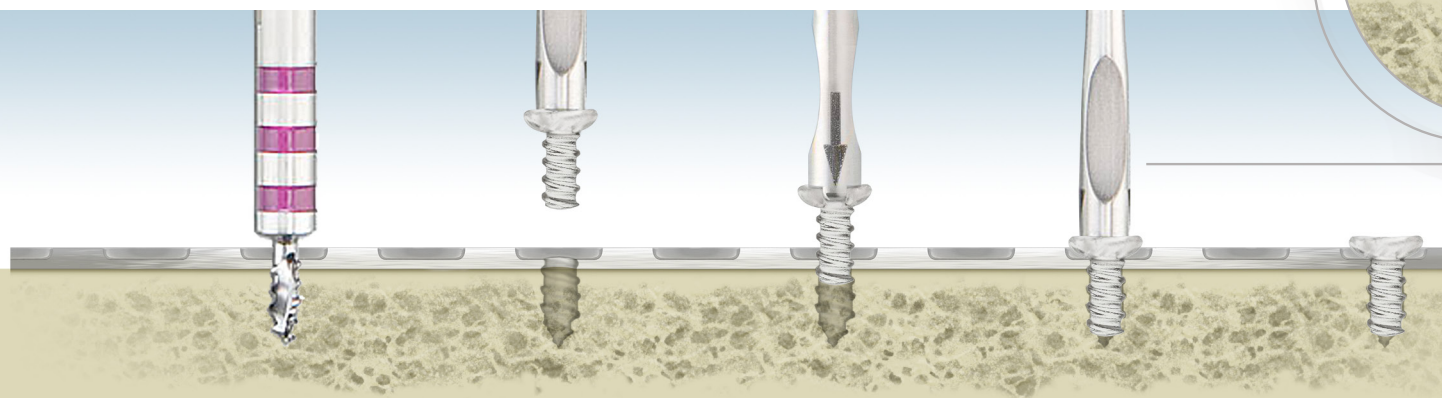
2.2mm Delta Plates

Partial Countersink Plates

70-92042 Partial Countersink Plate, 2 x 21, 1.4 mm Thick

70-92043 Partial Countersink Plate, 3 x 21, 1.4 mm Thick

70-92057 Partial Countersink Plate, 1 x 21, 1.4 mm Thick



A surgeon must always rely on his or her own professional clinical judgment when deciding whether to use a particular product when treating a particular patient. Stryker does not dispense medical advice and recommends that surgeons be trained in the use of any particular product before using it in surgery.

The information presented is intended to demonstrate the breadth of Stryker product offerings. A surgeon must always refer to the package insert, product label and/or instructions for use before using any Stryker product. Products may not be available in all markets because product availability is subject to the regulatory and/or medical practices in individual markets. Please contact your Stryker representative if you have questions about the availability of Stryker products in your area.

Stryker Corporation or its divisions or other corporate affiliated entities own, use or have applied for the following trademarks or service marks: **Delta**, **Stryker**. All other trademarks are trademarks of their respective owners or holders.

References: 1. Laughlin, R.M., Block, M.S., Wilk, R., Malloy, R.B., Kent, J.N.: Resorbable Plates for the Fixation of Mandibular Fractures: A Prospective Study, 2007.

Literature Number:
9410-400-437 Rev. None
UnDe/P.S.

Copyright © 2015 Stryker
Printed in USA

Stryker Craniomaxillofacial
Portage, MI 49002 USA
t: 269 389 5346
toll free: 800 962 6558
f: 877 648 7114

www.stryker.com

stryker[®]